



HUNTERS POINT SHIPYARD PHASE I UPDATE  
HILLTOP (BLOCK 52) AND HILLSIDE (BLOCK 48) PARCELS  
PROJECT UPDATE 05.09.2022

LK1



## Slide 2

---

**LK1**

LeRoy King, 10/13/2020

# BLOCK 52 -77 UNITS



# BLOCK 52 -77 UNITS



# BLOCK 52

-77 UNITS

- Project Milestones
  - Design approval 7/2019
  - Groundbreaking 11/2021
  - 9 (nine) BMR units
  - Scheduled completion end of 2022
  - Project Challenges
    - Supply Chain
      - Elevators
      - Exterior finishes
      - Solar panels
      - Car lifts

# BLOCK 52

## INTERIOR

- Interior (walls and ceiling)
  - Main interior corridors, shafts, and wet walls/Plumbing walls (drywall completed)
  - Interior (metal) architectural walls started (35% complete)
  - Wall and ceiling insulation (50% complete)
  - Taping (corridors, shafts, wet walls complete)
  - Immediately after MEP (Mech, Plumbing, Electrical) trades have been completed rough-in final drywall and taping will start.

# BLOCK 52



# BLOCK 52

## INTERIOR



# BLOCK 52

MEP (MECH, ELECTRICAL, PLUMBING)

- Completion of MEP rough-ins (all floors).
  - Permanent power (June 2022)
  - Elevators (September 2022) supply chain issues
  - Mechanical (split system) units installed on the roof
  - Ducts installed in joint bays
  - Tubs (40% Complete)
  - Main switchgear installed
  - Building boilers installed
  - MEP Rough-in
    - 1<sup>st</sup> floor/garage (90% Complete)
    - 2<sup>nd</sup> floor (30% Complete)
    - 3<sup>rd</sup> floor (40% Complete)
    - 4<sup>th</sup> floor (60% Complete)

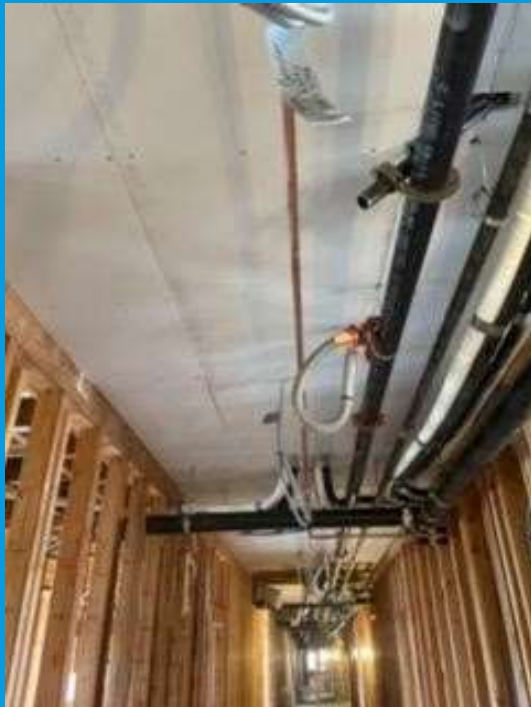
# BLOCK 52

MEP (MECH, ELECTRICAL, PLUMBING)



# BLOCK 52

MEP (MECH, ELECTRICAL, PLUMBING)



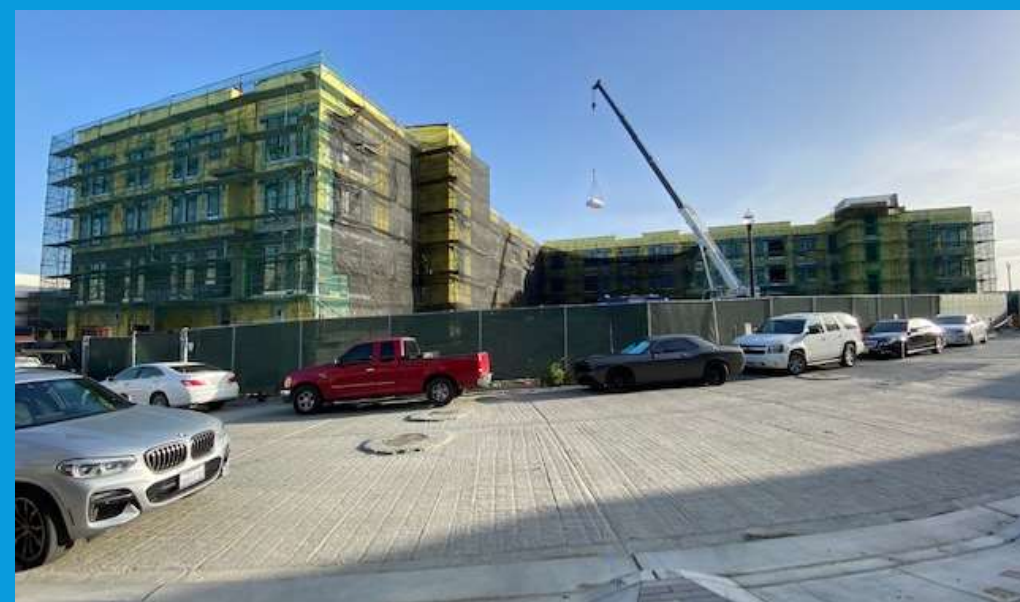
# BLOCK 52

EXTERIOR ENVELOPE, SITE WORK, PAVILION

- Exterior Envelope
  - Scaffold (complete)
  - Window/doors (90% complete)
  - Flashing/paper/lath (30% complete)
  - WP at deck/balconies (15% complete)
- Pavilion
  - Foundation to start in June 2022
  - Framing and MEP to start in September
- Site work
  - Avocet way schedule to start mid-summer
  - Courtyard utilities (75% complete)
  - Planter/landscaping/flatwork, to start in mid-summer

# BLOCK 52

EXTERIOR ENVELOPE, SITE WORK, PAVILION



# BLOCK 52

## EXTERIOR ENVELOPE



# BLOCK 48

404 UNITS

- 404 Units
  - La Salle/Griffith St
  - 8 Podium (274 homes)
  - 9 Townhomes (130 Homes)
- Utilities (underground) 98% complete
  - Water department (SFWD) final connections scheduled by end of May 2022
- Dry utilities (power) 90% complete
- Shoring/Mass Grading to start in June (2022)

# BLOCK 48

404 UNITS



# BLOCK 48 (HILLSIDE PARCEL)



## BLOCK 48 (HILLSIDE PARCEL)



# BLOCK 48

